

# SM 120 LED STREET LIGHT

WORLDWIDE POWERED

ACTIVE POWER FACTOR CORRECTION (PFC)

ADAPTIVE ROTATION INSTALLATION FRAME, RETROFIT WISE

LEDs – 160 LM/W

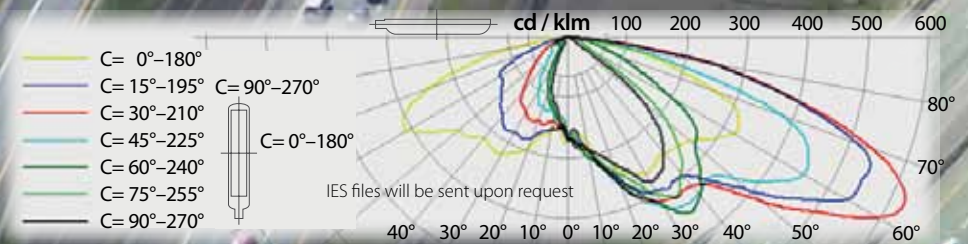
EXTREMELY WIDE ASYMMETRIC LENSES

ZERO LIGHT POLLUTION

AUTOMATIC ECONOMY LATE NIGHT DIMMING \*

## SM 120

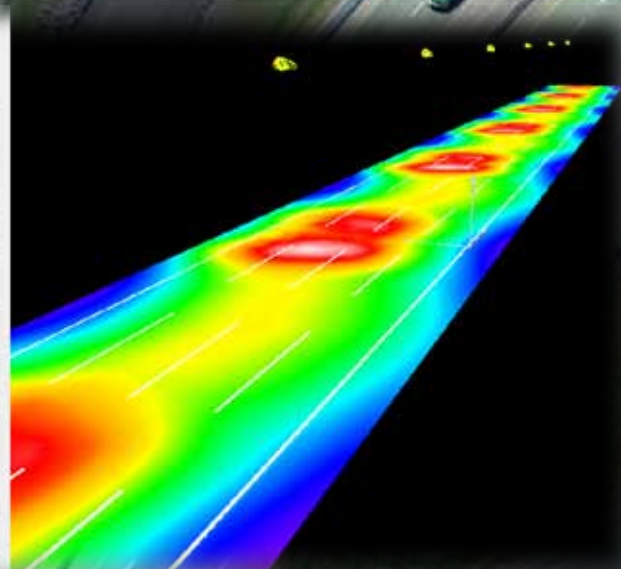
- HIGH ENERGY EFFICIENCY
- NO MAINTENANCE COSTS
- LONG LIFECYCLE
- HIGH QUALITY AREA ILLUMINATION
- ERGONOMICAL – CLOSE TO NATURAL LIGHT
- ECOLOGICAL – MERCURY AND LEAD FREE



**False Colours**

illuminances

<input type="text" value="20.00"/>	20.00 lx
<input type="text" value="17.50"/>	17.50 lx
<input type="text" value="15.00"/>	15.00 lx
<input type="text" value="12.50"/>	12.50 lx
<input type="text" value="10.00"/>	10.00 lx
<input type="text" value="7.50"/>	7.50 lx
<input type="text" value="5.00"/>	5.00 lx
<input type="text" value="2.50"/>	2.50 lx
<input type="text" value="0.00"/>	0.00 lx



# SM120

## SPECIFICATIONS

AC Input Voltage	90 ÷ 305 V AC
DC Input Voltage	127 ÷ 431 V DC
Mains Frequency	47 ÷ 63 Hz
Power Factor (PF) at 230V	min 95 %
Power Factor (PF) at 115 V	min 98 %
LED Power Dissipation	115.2 W
Power Efficiency	90 %
Total Power Dissipation	126 W
LED Light Output	160 lm/W
Current Efficiency	81 %
LED Luminous Flux	14 788 lm
Junction Temperature at Ta = 25°C	70°C
Thermal Efficiency	91 %
Lens Efficiency	92 %
Real Luminaire Efficacy (LER)	98 lm/W
Color Rendering Index (CRI)	65 ÷ 80
Real Lamp Luminous Flux for:	
Cool White (CRI 65)	12 380 lm
Neutral White (CRI 75)	11 480 lm
Warm White (CRI 80)	9 720 lm
Zero Light Pollution	0 cd at 90°
Operating Temperature	-40° ÷ +45°C
Operating Humidity	10 ÷ 95 % RH
Lifespan L70	> 160 000 h
Ingress protection rating	IP 65
Electrical Safety Class	Class II
Polycarbonate optical cover	optional

## MECHANICAL CONSTRUCTION

Marine Grade Aluminium Alloy Body	
Stainless Steel Rotation Mechanism	115° (-90° ÷ +15°)
Installation Diameter	ø 42 ÷ ø 76 mm
Dimensions	860 x 180 x 80 mm
Weight	6,2 kg

## Additional deliveries

- Zink plated metal poles
  - Means of fixing the pole
- height: 11 m ÷ 12,5 m  
underground / fundament

- \* Late night dimming:  
50 % illuminance decreasing after 4 hours till 1 h before dawn;  
Optional illuminance decreasing – 20 ÷ 90 %;  
Optional dimming start – 2 ÷ 8 hours;  
Optional dimming stop – 0,5 ÷ 3 h before dawn.



## SM120 Application According EU Standards

4 lanes x 3,5 m ME4a streets L = 35 m; H = 11,0 m; Oh = 1,5 m or b = 5°  
(more than 60 km/h)

4 lanes x 3,5 m ME5 streets L = 53 m; H = 11,0 m; Oh = 1,5 m or b = 5°  
(less than 60 km/h)

3 lanes x 3,5 m ME4a streets L = 43 m; H = 9,5 m; Oh = 0,5 m  
(more than 60 km/h)

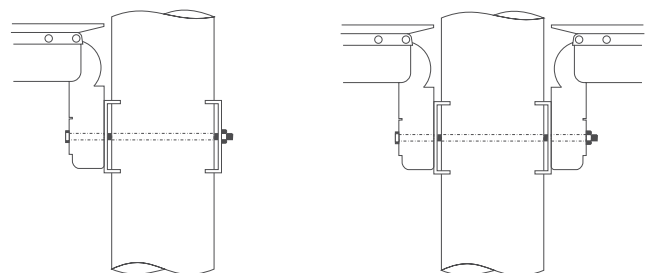
3 lanes x 3,5 m ME5 streets L = 61 m; H = 10,5 m; Oh = 1,0 m  
(less than 60 km/h)

## SM120 Application According US Standards

4 lanes x 3,5 m streets L = 39 m; H = 11,0 m; Oh = 0,5 m or b = 5°

3 lanes x 3,5 m streets L = 53 m; H = 10,0 m; Oh = 1,0 m

- L – Distance between the light sources (poles)
- H – Height of the light source above the ground
- Oh – Luminaire Overhang arm
- b – Luminaire tilt angle



Optional kit for mounting one or two lamps sideways to the pole ø 70 ÷ 200 mm

C E EN61000-6-3:1997, EN61000-6-1:1997  
Quality Assurance ISO 9001:2000; AQAP 2110



**AURA Network Corporation Ltd.**  
77 Goulden House, Bullen Street,  
London SW11 3HQ, England, UK

T: + 44 (0) 8450556303 M: +44 (0) 7947863888  
T: + 44 (0) 8450556305 E: welcome@auracorporation.net  
F: + 44 (0) 8458331067 www.auracorporation.net